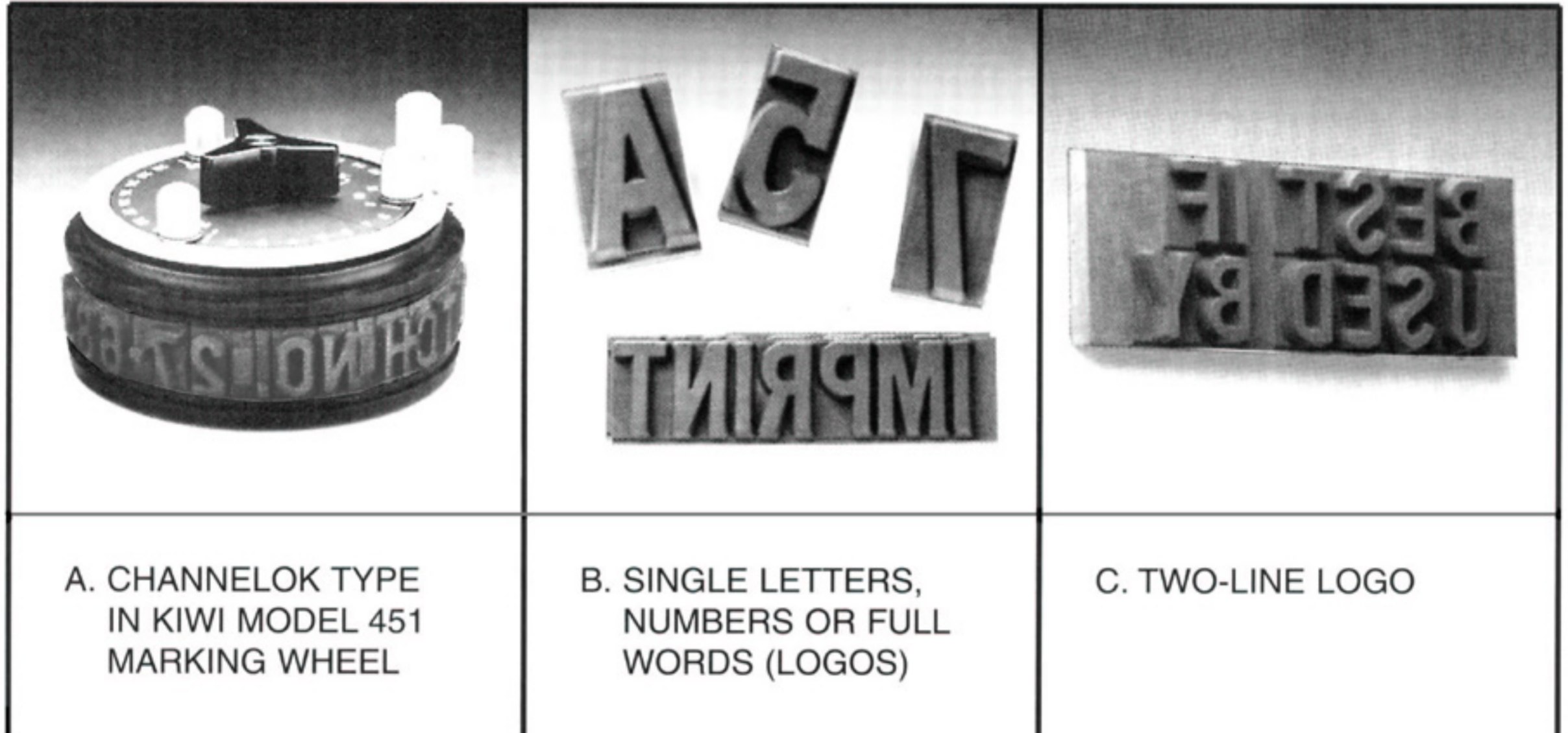


KIWI TYPE STYLES



CHANNELOK® TYPE

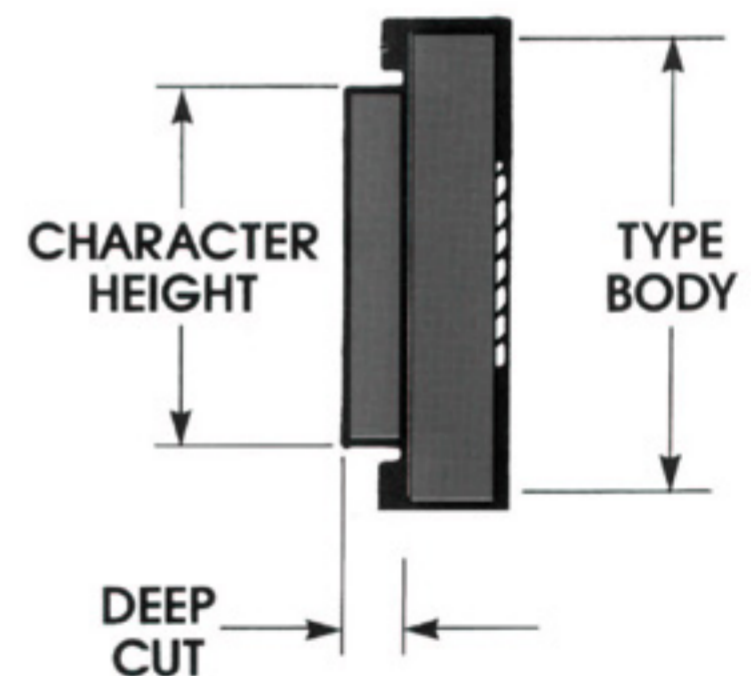


A. CHANNELOK TYPE
IN KIWI MODEL 451
MARKING WHEEL

B. SINGLE LETTERS,
NUMBERS OR FULL
WORDS (LOGOS)

C. TWO-LINE LOGO

- Quick Change—Snaps into channels of Kiwi Orbit series or custom built case coders and Channelok type plates
- Available in regular or deepcut styles
- Natural rubber composition
- Five type body sizes— $\frac{1}{2}$ ", $\frac{3}{4}$ ", 1", $1\frac{1}{4}$ ", & $1\frac{1}{2}$ "
- Most deepcut styles available in economically-priced Letter or Figure sets



Channelok type is held securely in type channels which are part of the marking wheel. The deepcut style is required with Kiwi Orbit Series Coders (Bulletin #310).

Deepcut type features a high type relief for improved printing. Saw cuts in the type body allow it to curve to fit the circumference of the marking wheel.

CHANNELOK

FIGURE (F) AND LETTER (L) SETS

For maximum economy most deepcut style Channelok type can be purchased in sets of four (designated by the suffix "4" after the number). Type sets are specified by adding an "F" or "L" prefix to the type style number (examples: F227D4 . . . L231D4). An "F" set consists of the figures 0-9; an "L" set consists of the letters A-Z.

The table below shows sets stocked for immediate delivery.

Character Height	Type Body	Figure Set	Letter Set
3/8"	3/4"	F227D4	L227D4
7/16"	3/4"	F228D4	L228D4
1/2"	3/4"	F229D4	L229D4
5/8"	3/4"	F230D4	L230D4
3/4"	1"	F231D4	L231D4
7/8"	1"	F232D4	L232D4
1"	1 1/4"	F400D4	L400D4
1 5/16"	1 1/2"	F401D4	L401D4
1/2"	3/4"	F88D4	L88D4
5/8"	3/4"	F90D4	L90D4
7/8"	1"	F93D4	L93D4

		Size	Approximate Characters per Inch
56	USE RUBBER STAMPS TO INCREASE EFFIC	32 1/16	18
58	USE RUBBER STAMPS TO INCREASE	34 5/64	16
60	USE RUBBER STAMPS TO INC	45 3/32	14
62	USE RUBBER STAMPS TO IN	67 1/8	12
64	USE RUBBER STAMPS	89 5/32	10
66	USE RUBBER STA	98 3/16	8
68	USE RUBBER	12 1/4	7
70	USE RUBB	34 5/16	6
71	USE RU	56 3/8	4-1/2
72	USE RU 78	7/16	4
235	USE RUBBER STAMPS TO INCREASE	23 9/64	16
236	USE RUBBER STAMPS TO IN	34 3/16	13

		<u>Size</u>	<u>Approximate Characters per Inch</u>
237	USE RUBBER STAMPS 45	1/4	11
238	USE RUBBER STA 56	5/16	9
239	USE RUBBER S 76	3/8	7
240	USE RUBBE 89	7/16	6
241	USE RU 76	5/8	5
242	USE R 24	3/4	3-1/2
243	USE 35	15/16	3
220	USE RUBBER STAMPS TO 45	1/8	11
221	USE RUBBER STAMPS 78	5/32	10
223	USE RUBBER STA 34	3/16	8
225	USE RUBBER 89	1/4	6

		<u>Size</u>	<u>Approximate Characters per Inch</u>
226	USE RUBB 10	5/16	5
227 & 227D	USE RU 23	3/8	4
228 & 228D	USE R 45	7/16	3-1/2
229 & 229D	USE 67	1/2	3
230 & 230D	USE 8	5/8	2-1/2
231 & 231D	USE 9	25/32	2
232 & 232D	USE 9	7/8	2
400 & 400D	U 12	1	1
401 & 401D	U 3	1-5/16	1

NOTE: Suffix "D" denotes deepcut type.

88 & 88D

USE R 24

Size

1/2

Approximate
Characters
per Inch

4-1/2

90 & 90D

USE 35

5/8

3-1/2

93 & 93D

US 67

7/8

2-1/2

94 & 94D

US 46

1-1/4

2

402

US 4

1-15/32 1-1/2

403

US 6

2

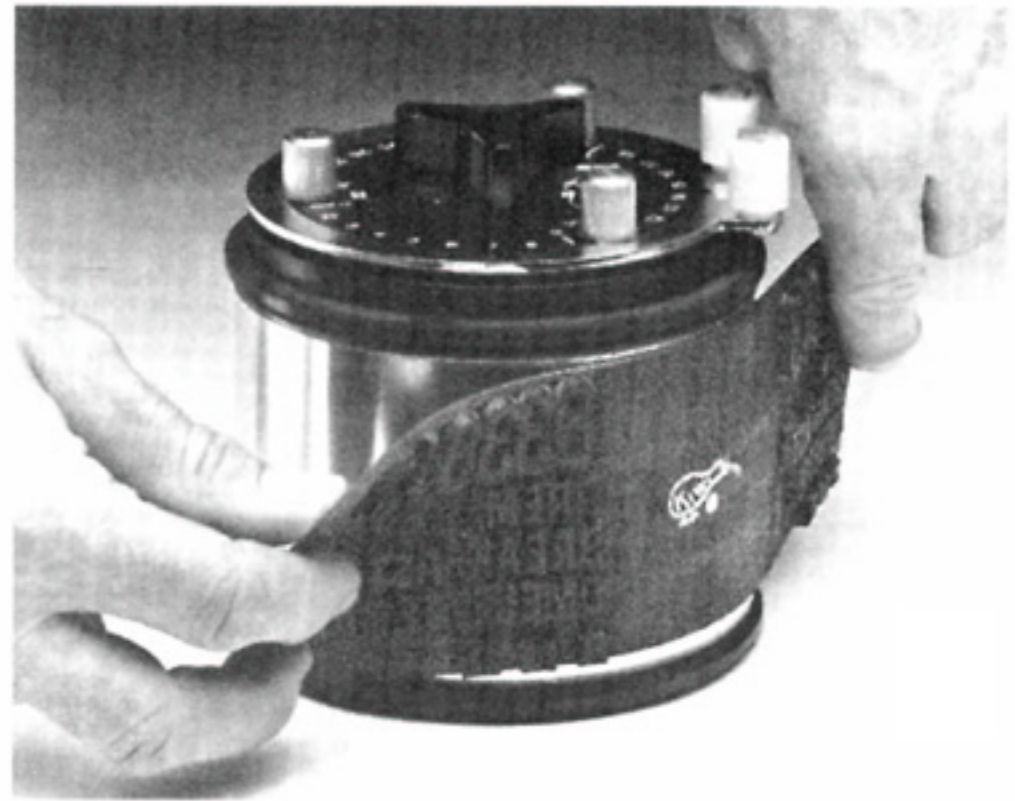
1-1/2

NOTE: Suffix "D" denotes deepcut type.



Printed in U.S.A.

MAGFLEX PRINTING MATS



Magflex printing mats have a magnetic backing which permits quick placement and removal. They are used with Kiwi Orbit Series Case Coders, Kiwi Flexographic Printers and Kiwi KD Flat Case Printers. Magflex mats are recommended where blocks of copy, bar codes, logos or similar information must be changed frequently. Mats are available in 0.125" (5 mm) and 0.250" (10 mm) thicknesses.

MAGFLEX PRINTING MATS



Printing Mats are recommended for use with multi-line copy, bar codes, company logos and designs. Mats can be furnished plain or adhesive backed, and are used with Kiwi Orbit Series Case Coders, Model 1020 Small Carton Printers and Kiwi Flexographic Printers. Typical thickness is 0.125" (5mm) Printing mats are available in either rubber or photopolymer materials.